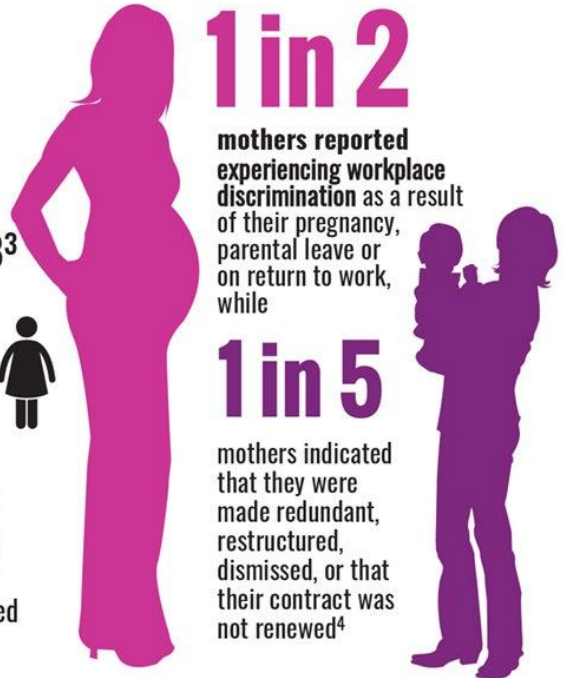


Gender Equality



In 2015-2016, average superannuation balances for women aged 60-64 were **just over half (58%)** those of men.²



- Australian women account for:
- ▶ 68% of primary carers
 - ▶ 70% of primary unpaid carers for children
 - ▶ 58% of primary unpaid carers for the elderly and people with disability or long-term health condition⁶



Australia ranks 48th in the world in terms of female political empowerment (the representation of women in politics). This is down from 32nd in 2006⁸.